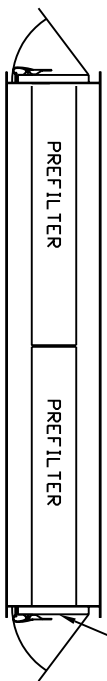


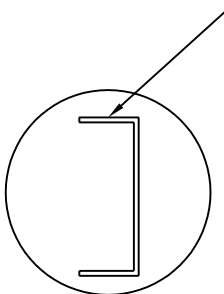
NOTE: STANDARD UNIT IS RIGHT HAND ACCESS

DOORS BOTH SIDES OF HOUSINGS OVER TWO WIDE



TOP VIEW

TRACKS ARE AVAILABLE TO FIT 2", 4", 6" OR 12" DEEP FILTERS GALVANIZED TRACK

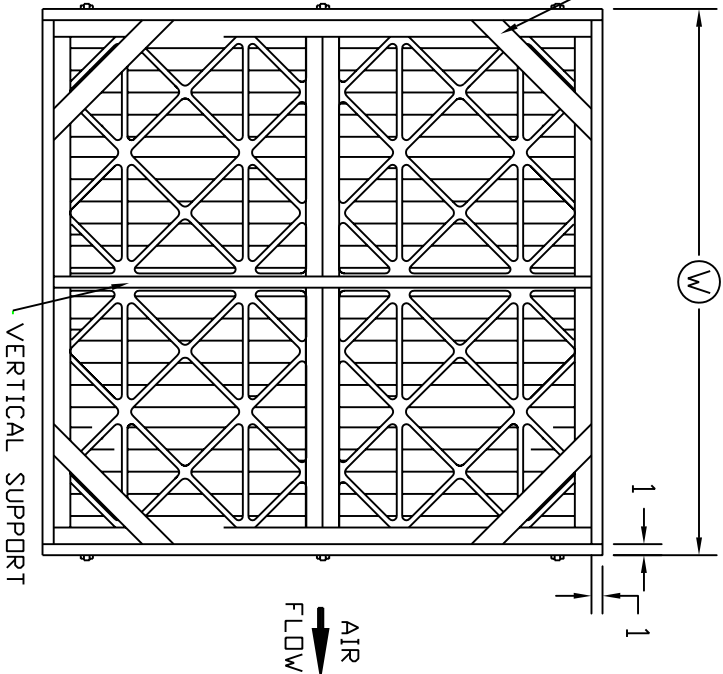


FLAT BANK ASHRAE HOUSING

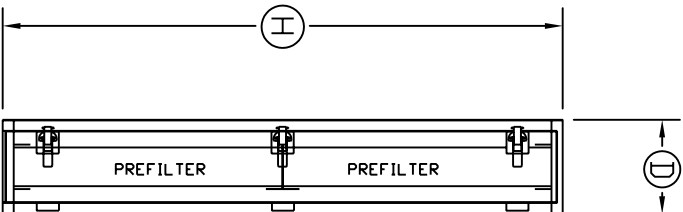
SPECIFICATION

- 1.) 16 GA. GALVANIZED STEEL CONSTRUCTION.
- 2.) 16 GA GALVANIZED STEEL FILTER TRACK
- 3.) DOORS SEALED WITH CLOSED CELL NEOPRENE GASKETING.
- 4.) TWO POUND DENSITY URETHANE FOAM INSIDE ACCESS DOORS GASKETS FILTERS.
- 5.) METAL TO METAL COMPONENTS SEALED WITH SILICONE COMPOUND.
- 6.) DOORS FITTED WITH QUICK ACTION, POSITIVE PRESSURE TRIP LOCK LATCHES.

CORNER GUSSETS (UPSTREAM ONLY)



UPSTREAM SIDE



DOOR VIEW

HEIGHT	DIMENSION "H"
1	26"
1 1/2	37 3/4"
2	49 3/4"
2 1/2	61 5/8"
3	73 5/8"
3 1/2	85 1/2"
4	97 1/2"

WIDTH	DIMENSION "W"
1	25 3/4"
1 1/2	37 1/4"
2	49 1/4"
2 1/2	61 5/8"
3	72 7/8"
3 1/2	84 5/8"
4	96 1/2"
4 1/2	108 1/8"
5	120 1/8"
5 1/2	131 3/4"
6"	143 3/4"

DEPTH	"D"
8 1/2"	
16 1/2"	

NOTE: ALL HOUSING DIM ARE EXACT SIZE

HOUSING CONFIGURATION _____ X _____
 HOUSING DIM: (H) _____ (W) _____ (D) _____
 HOUSINGS REQUIRED: _____

			DRAWING NUMBER: TMFB-0001
		FILTER CORPORATION CORPORATE HEADQUARTERS: 93 INDUSTRIAL DRIVE LOUISA, VA. 23093	DATE: 04-14-03 SCALE: -
DRAWN BY: B. DUFFY		APPROVED BY: B. DUFFY	
TITLE: TRI-MET FB FLAT BANK HOUSING		REV.: A	